



LINK

THE INSIGHT YOU WANT.



GET THE INFORMATION YOU NEED TO KNOW, RIGHT NOW.

Knowing where your equipment is, what it's doing and how it's performing is key to running your business. It's how you get more value from your equipment and it's how you stay competitive.

Cat® Connect LINK technologies wirelessly connect you to your equipment, giving you access to essential information you need to know to run your business. From fuel burn and cycle times to hours and maintenance schedules, LINK data helps you make timely, fact-based decisions that can boost the efficiency of your fleet and productivity of your job sites.

PM DUE





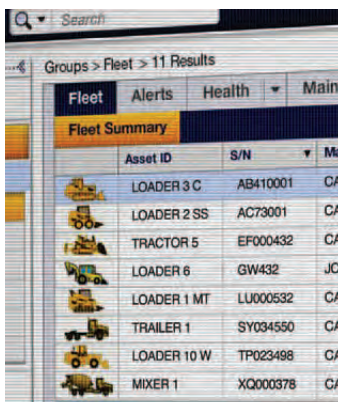
MANAGE EQUIPMENT WITH REAL-TIME DATA

Today's heavy equipment generates a huge amount of data while it's working—including machine hours, working and idle times, fuel usage, fault codes, performance information and more. LINK technologies gather and process that data, enabling you to monitor the health and status of your machines. Analysis and scheduling tools help you track routine maintenance, plan for service procedures and avoid major equipment failures.



HELP OPERATORS WORK MORE EFFICIENTLY

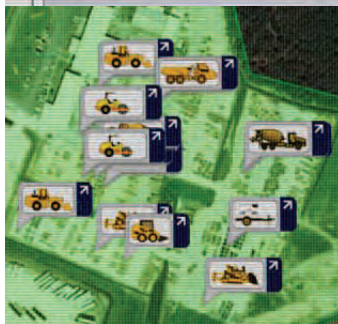
Equipment operators can have the biggest impact on the productivity your equipment. LINK technologies give your operators immediate feedback about machine performance and job progress. Operators can monitor payloads, load counts, progress to grade and compaction, and much more. When a problem arises, operators can quickly assess the issue and take appropriate action to minimize service costs and downtime.



Groups > Fleet > 11 Results			
Fleet	Alerts	Health	Maint
Fleet Summary			
	Asset ID	S/N	Ma
	LOADER 3 C	AB410001	CA
	LOADER 2 SS	AC73001	CA
	TRACTOR 5	EF000432	CA
	LOADER 6	GW432	JCI
	LOADER 1 MT	LU000532	CA
	TRAILER 1	SY034550	CA
	LOADER 10 W	TP023498	CA
	MIXER 1	XQ000378	CA

TRACK JOB PROGRESS, PRODUCTION AND COSTS— WITHOUT GUESSWORK

Whether you're in your office or on the jobsite, you can easily access data about your machine or fleet via the online VisionLink® user interface from your computer or mobile device. VisionLink gives you timely, actionable information you can use to make smart decisions about the productivity of your equipment to keep your jobsite running at peak efficiency. Detailed information about each job, like production totals, time, and job costs, can be invaluable for estimating future projects to help you stay profitable.



THE INSIGHT YOU WANT FROM YOUR EQUIPMENT.

LINK technologies are available from the factory or as dealer-installed options.

CAT® CONNECT



EQUIPMENT
MANAGEMENT



PRODUCTIVITY



SAFETY



SUSTAINABILITY

Cat Connect combines technologies and services to boost your jobsite performance. Whether you're running a few pieces of equipment or a big fleet, your Cat dealer can help you put together a package that gives you timely information about your operations, helps you complete jobs faster and lets you achieve the efficiency you want.

It's what we're built to deliver.

BUILT FOR IT.™



AEXQ1208

© 2014 Caterpillar. All Rights Reserved.
CAT, CATERPILLAR, BUILT FOR IT, their respective logos, Product Link, AccuGrade, "Caterpillar Yellow," the "Power Edge" trade dress, as well as corporate and product identity used herein, are trademarks of Caterpillar and may not be used without permission.

VisionLink is a trademark of Trimble Navigation Limited, registered in the United States and in other countries.