

SEM658D

WHEEL LOADER



Main Specifications

Main Specifications	
Rated Load / kg	5,000
Operating Weight with Standard Bucket / kg	17,158
Bucket Capacity / m ³	2.7 cum
Wheel Base / mm	3,300
Overall Dimension / mm	8,143 * 2,963 * 3,457
Max. Drawbar Force / kN	170
Breakout Force / kN	178
Dump Clearance / mm	3,113

Transmission	
Transmission Type	Countershaft, Powershift, EH Control
Transmission Gears	F4/R3
Torque Converter Type	Single Stage, 3 Elements
Maker & Type	SEM160
Forward I/Reverse I	7.2/7.2
Forward II/Reverse II	13/13
Forward III/Reverse III	23/23
Forward IV/Reverse IV	37/NA

Axle	
Main Drive Type	Spiral Bevel Gear, Single Stage
Final Drive Reduction Type	Planetary Type, Single Stage
Rear - Oscillating +/-	±11°

Engine	
Model	Weichai WD10G
Rated Power / kW	162
Rated Speed / r/min	2,200
Displacement / L	9.7

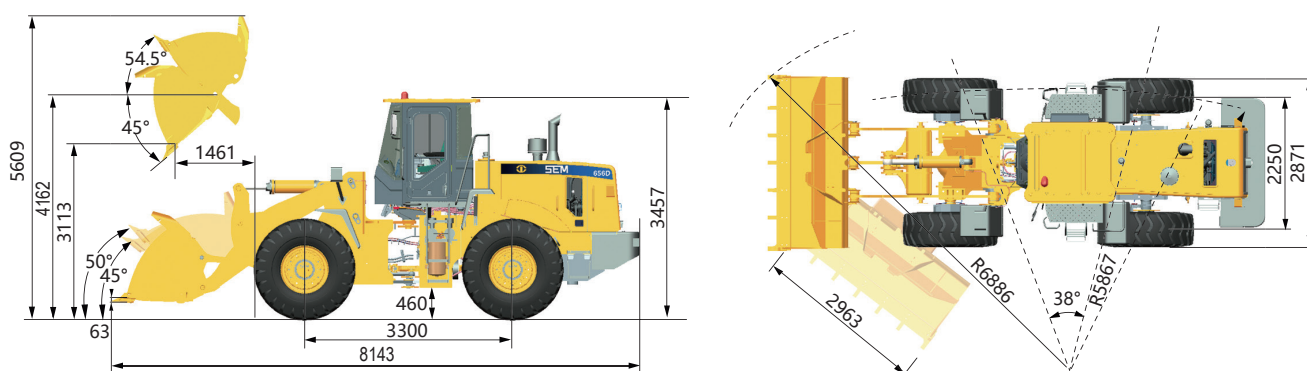
Implement Hydraulic	
Implement System Type	Single Load Sensing Flow Sharing System
Boom Raise Time / s	5.37
Hydraulic Cycle Time / s	9.3
System Pressure Setting / Mpa	18

Brake System	
Service Brake	Dry & Caliper, Air to Oil Control
Parking Brake	Drum/Shoe

Steering System	
System Type	Co-axial Flow-amplified
Steering Pump Type	Piston Pump
System Pressure Setting / Mpa	16
Steering Angle (L/R)	38±1°

Tires	
Size	23.5 - 25
Type	Bias
Layer	16
Textured Type	L3

Machine Dimensions



NOTE: Above details are based on a standard configuration. Materials and specifications are subject to change without notice. Featured machines in photos may include optional equipment. See William Adams for available options.

GET IN TOUCH TO FIND OUT MORE

1300 923 267 (WADAMS) | ENQUIRE@WILLIAMADAMS.COM.AU | WILLIAMADAMS.COM.AU



Caterpillar (Qingzhou) Ltd. Address: No. 12999 Nanhuan Road, Caterpillar Industrial Park, Qingzhou City, Shandong Province, Zip Code: 262500 P.R. China

© 2022 Caterpillar (Qingzhou) Ltd. All Rights Reserved. SEM Machinery, SEM, their respective logos, trade dress as well as corporate product identity used herein, are trademarks of Caterpillar (Qingzhou) Ltd. and may not be used without permission.

© 2022 Caterpillar. All Rights Reserved. CAT, CATERPILLAR, LET'S DO THE WORK, their respective logos, "Caterpillar Corporate Yellow", the "Power Edge" and Cat "Modern Hex" trade dress as well as corporate and product identity used herein, are trademarks of Caterpillar and may not be used without permission.

William Adams

