

SEM636D

WHEEL LOADER



Main Specifications

Main Specifications

Rated Load / kg	3,000
Operating Weight with Standard Bucket / kg	10,133
Bucket Capacity / m ³	1.7 cum
Wheel Base / mm	2,740
Overall Dimension / mm	7,422 * 2,354 * 3,182
Breakout Force / kN	113
Dump Clearance / mm	2,989
Articulated Angle	37±1

Transmission

Transmission Type	Countershaft, Powershift
Transmission Gears	F4/R2
Torque Converter Type	Single Stage, 3 Elements
Maker & Type	SEM TR100
Forward I/Reverse I	7.9/9.7
Forward II/Reverse II	14/31
Forward III/Reverse III	25/NA
Forward IV/Reverse IV	39/NA

Axle

Main Drive Type	Spiral Bevel Gear, Single Stage
Final Drive Reduction Type	Planetary Type, Single Stage
Rear - Oscillating +/-	±12°

Engine

Model	Weichai WP6G125E22
Rated Power / kW	92
Rated Speed / r/min	2,200
Displacement / L	6.754

Implement Hydraulic

Implement System Type	Gear Pump
Boom Raise Time / s	4.65
Hydraulic Cycle Time / s	8.34
System Pressure Setting / Mpa	18

Brake System

Service Brake	Dry & Caliper, Air to Oil Control
Parking Brake	Drum Type Shoe Brake, Spring Applied & Oil Released

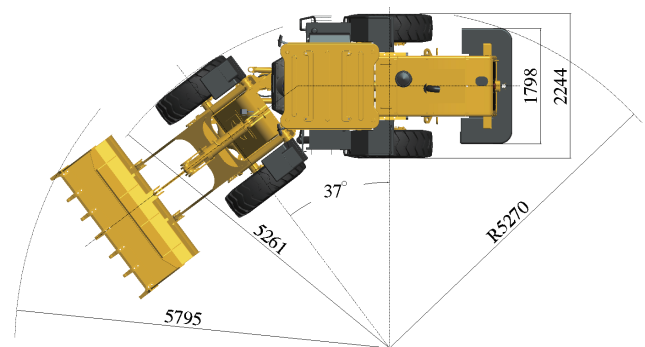
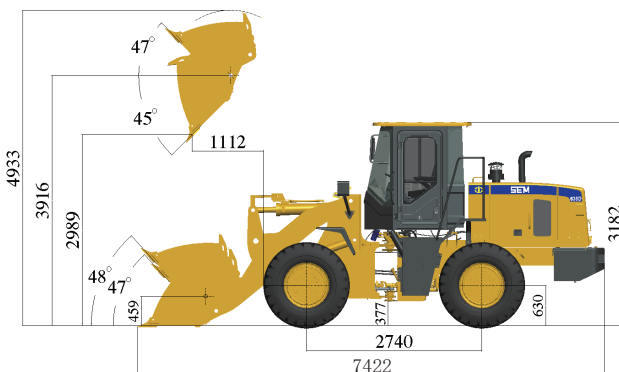
Steering System

System Type	Shared Flow
Steering Pump Type / Mpa	Gear Pump
System Pressure Setting	14

Tires

Size	17.5 - 25
Type	PR
Layer	12
Textured Type	L3

Machine Dimensions



NOTE: Above details are based on a standard configuration. Materials and specifications are subject to change without notice. Featured machines in photos may include optional equipment. See William Adams for available options.

GET IN TOUCH TO FIND OUT MORE

1300 923 267 (WADAMS) | ENQUIRE@WILLIAMADAMS.COM.AU | WILLIAMADAMS.COM.AU



Caterpillar (Qingzhou) Ltd. Address: No. 12999 Nanhuan Road, Caterpillar Industrial Park, Qingzhou City, Shandong Province, Zip Code: 262500 P.R. China

© 2022 Caterpillar (Qingzhou) Ltd. All Rights Reserved. SEM Machinery, SEM, their respective logos, trade dress as well as corporate product identity used herein, are trademarks of Caterpillar (Qingzhou) Ltd. and may not be used without permission.

© 2022 Caterpillar. All Rights Reserved. CAT, CATERPILLAR, LET'S DO THE WORK, their respective logos, "Caterpillar Corporate Yellow", the "Power Edge" and Cat "Modern Hex" trade dress as well as corporate and product identity used herein, are trademarks of Caterpillar and may not be used without permission.

William Adams

