



WINTER 2019
PLUS.

Thomas Wolf
ENERGY

CAT

William Adams 

As we head into the new financial year, it really is a privilege to sincerely welcome you all to our Winter edition of PLUS. We trust you will enjoy the broad range of content, including editorials, stories about our customers, industry and its people, information segments and general news.

The current financial year has certainly been alive in terms of industry activity on the back of a reasonably strong residential and infrastructure pipeline of works and projects. This is evident with total industry equipment sales in Victoria and Tasmania up by 4.5% at some 4,526 units sold in the 2018 / 2019 financial year. All indications are our industry will remain healthy throughout the financial year ahead. Pleasingly, both major political parties have continued to push ahead with their election commitments to boost infrastructure, transport and training.

Here at William Adams we continue to work smart and hard to meet the needs of our customers. We have been investing in tooling, innovation, our facilities, solutions and the best people in order to assist you manage a safe, successful and profitable business throughout any economic cycle or climate. As such attracting, developing and retaining good people in our business remains a constant focus for us. This year our commitment to training apprentices escalated to a new level with our first ever mid-year intake of thirteen new apprentices recruited in July, 2018 followed by a further fifteen in January, 2019.

Equally, the major upgrade and development of our Clayton Head Office, which was originally opened in 1967, has now commenced. We look forward to the new look, employee and customer engaging Clayton facility being completed by this Christmas. We are enthusiastic about welcoming you all to visit.

Personally, I have now been fortunate to be part of the William Adams and Cat family for greater than 20 years. This has been an amazing period with so many collective achievements, experiences and wonderful memories to look back on. However, as I look forward into the future, I also

believe we have some of our most exciting times ahead. With progress comes change and there is no doubt this is the case with our industry, our customers and our organisation. With this in mind and in line with our continuity planning, you will also read that excitingly Adam Elphinstone has recently been added to the William Adams Caterpillar Sales and Service Agreement as a second name and signatory alongside Dale Elphinstone. Adam has also been appointed as Managing Director of Elphinstone Group (Aust) Pty Ltd. In addition, over the past six months we have been developing our new Strategic Plan. This has allowed us to reflect on and consider what is, and what will be important to our customers, our people and our business.

From this process we have now encapsulated these important elements and articulated them via our new Aspiration: A market leading and adventurous CAT dealer, delivering success for our customers, employees and stakeholders, through innovation and talented people. "We Bleed Yellow Together." Collectively this certainly marks an important step in our future.

The past 12 months has provided a number of excellent opportunities to engage with our very special, wide and varied customers. In order to build strong valuable relationships with the next generation of leaders within our industry and customer group, we recently facilitated the 'Next Generation Tour'. This included some 15 young business leaders hosted by a number of our William Adams people, including Dale Elphinstone, Adam Elphinstone and Ryan O'Doherty touring Caterpillar factories and facilities in the United States and engaging with senior Caterpillar leaders. One of the highlights was obviously visiting the home of CAT – Peoria.

WELCOME

Equally as exciting was hosting some 86 customers in Munich at Bauma 2019. Bauma is the world's leading trade fair for construction equipment, building material machines and mining equipment. In one word, this year Bauma was "Gigantic." From exhibition space to the number of participants, our customers experienced the largest and most successful Bauma ever with 3,700 exhibitors and the over 620,000 visitors.

Finally we genuinely thank you for the significant contribution you make to the various industries we work in and we are extremely appreciative of your loyalty, support and ongoing business. Whilst our aim and ambition is to Be the Customers' Needs, we do appreciate we do not always meet your expectations, and for this we do sincerely apologise. However, please rest assured we will not stop trying to improve and to exceed your requirements in all areas of business.

Please enjoy reading and perusing the pages of PLUS Winter edition 2019.



Eddy Kontelj
Managing Director

**CLAYTON
(HEAD OFFICE)**
17-55 Nantilla Road
Clayton VIC 3168
(03) 9566 0666

DANDENONG
2-4 Fowler Rd,
Dandenong South VIC 3175
(03) 9767 3600

MILDURA
345 Benetook Avenue
Mildura VIC 3502
(03) 5018 6100

HORSHAM
81-83 Dimboola Road
Horsham VIC 3400
(03) 5362 4100

SHEPPARTON
7847 Goulburn Valley Highway
Shepparton VIC 3631
(03) 5832 5500

TRARALGON
25-27 Standing Drive
Traralgon VIC 3844
(03) 5175 6200

SWAN HILL
36-38 Curlewis Street
Swan Hill VIC 3585
(03) 5036 3900

BENDIGO
11a Trantara Court
East Bendigo VIC 3550
(03) 5434 2100

PORTLAND
167 Garden Street
Portland VIC 3305
(03) 5521 5100

WODONGA
200 Melbourne Road
Wodonga VIC
(02) 6051 5800

GEELONG
Cnr Fyans & Crown Street
Geelong South VIC 3220
(03) 5223 5223

LAVERTON
32-42 Spencer Street
Sunshine West VIC 3028
(03) 9931 9666

TASMANIA

LAUNCESTON
308 George Town Road
Rocherlea TAS 7248
(03) 6325 0900

HOBART
2 Chardonay Drive
Berriedale TAS 7011
(03) 6249 0566

BURNIE
Bass Highway
Somerset TAS 7322
(03) 6433 8888



Designed by meg annabelle design

Plus is published by William Adams PTY LTD as one of the many CAT PLUS services provided by your Caterpillar dealer in Victoria and Tasmania. All correspondence or requests for additions to our mailing list should be addressed to;

Advertising and Promotion Department
William Adams PTY LTD PO. Box 164,
Clayton 3168, Australia

(03) 9566 0666

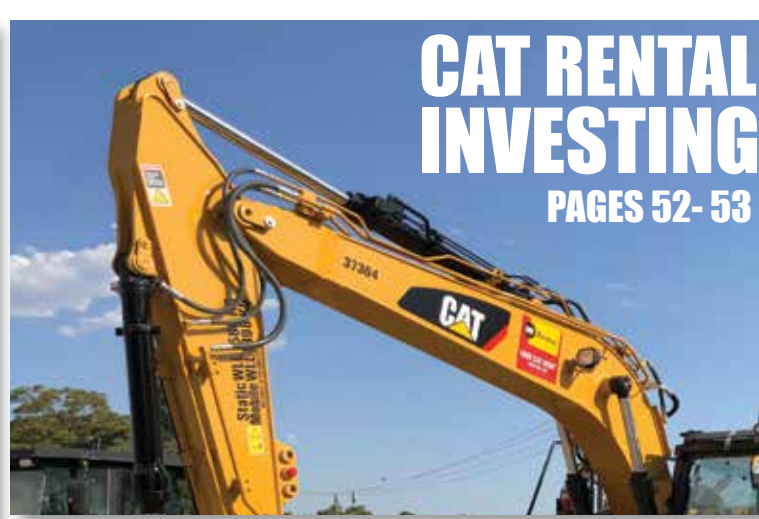
1300 WADAMS
williamadams.com.au

Editorial content in this magazine can be reproduced in other media upon approval granted by William Adams' advertising and promotion department. Information provided (specifications etc..) as printed are believed to be correct and accurate but no responsibility will be accepted by William Adams for any details found to be incorrect. CATERPILLAR and CAT are registered trademarks of Caterpillar inc.

GRADCO
PAGES 14 - 15



**CAT RENTAL
INVESTING**
PAGES 52 - 53



EXTONS MILESTONE
PAGES 18 - 19



**WALTERS
CONTRACTING** PAGE 20



BAUMA RECAP
PAGES 42 - 43



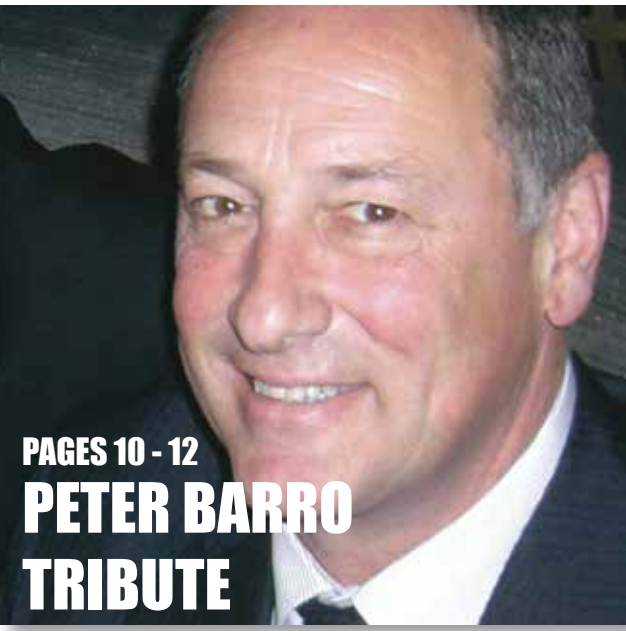
**CHANGE
THE GAME**
PAGES 40 - 41



MINING
PAGES 31 - 37



PAGES 10 - 12
**PETER BARRO
TRIBUTE**



**PLUS
CAMERA**
PAGES 56 - 59



**PRODUCT
SUPPORT** PAGE 49



AG
PAGES
26 - 30



WINTER 2019
PLUS.

ELPHINSTONE GROUP ANNOUNCEMENT FROM THE EXECUTIVE CHAIRMAN, DALE ELPHINSTONE

ADAM ELPHINSTONE ADDED TO CATERPILLAR DEALER AGREEMENT

Effective 17 April 2019, Adam Elphinstone has been added to the William Adams Caterpillar Sales and Service Agreement as a second name and signatory. This in effect provides Caterpillar's approval for Adam to become the Dealer Principal of William Adams, in my absence or on my retirement. While I expect to remain the Dealer Principal for a number of years yet, this is a very important step for our Elphinstone family and William Adams. We thank Caterpillar for its consideration and congratulate Adam on this outstanding achievement.



NEW ROLE FOR ADAM ELPHINSTONE

It gives us a great deal of pleasure to also congratulate Adam on his appointment as Managing Director of Elphinstone Group (Aust) Pty Ltd. While this position was previously held by Vince De Santis, there will be some changes to the position's responsibilities and reporting structure going forward.

In our ownership structure, Elphinstone Group (Aust) Pty Ltd (EGA) is the parent company of William Adams. EGA, via William Adams, also owns our interest in EPSA, Sitech, Ultimate Positioning, Phu Thai Cat and various other Caterpillar interests. Adam's new responsibilities will cover a number of our Caterpillar interests, including William Adams, EPSA, Sitech, Ultimate Positioning and other EGA responsibilities.

These will be transitioned over the coming months as we continue to develop our Group reporting structure to fit with our Continuity Plan.

While it will take some time to make the necessary changes to fill Adam's current role in William Adams, we expect Adam to take up his new position on a full time basis from 1 July 2019.

KELLY ELPHINSTONE AND ADAM ELPHINSTONE'S LEADERSHIP PROGRESS

30 June 2019 will conclude a three year time frame and three business cycles in a senior level management position for both Kelly and Adam.

This move for Adam and a planned future move for Kelly, will see Adam and Kelly move to positions where they will take over more of my responsibilities as we move towards the ultimate objective of our 10 year Continuity Plan.



▲ Kelly Elphinstone Managing Director, Elphinstone PTY LTD

This ultimate objective is to have the day to day management of the group handled by Kelly, Adam and the executive management team and my position change to a Non-Executive Chairman role.

We wish to take this opportunity to thank particularly our Elphinstone Executive Management Committee and the senior management teams of our respective businesses for their help, assistance and guidance as we take these next steps in our Continuity Plan.

Dale Elphinstone
EXECUTIVE CHAIRMAN



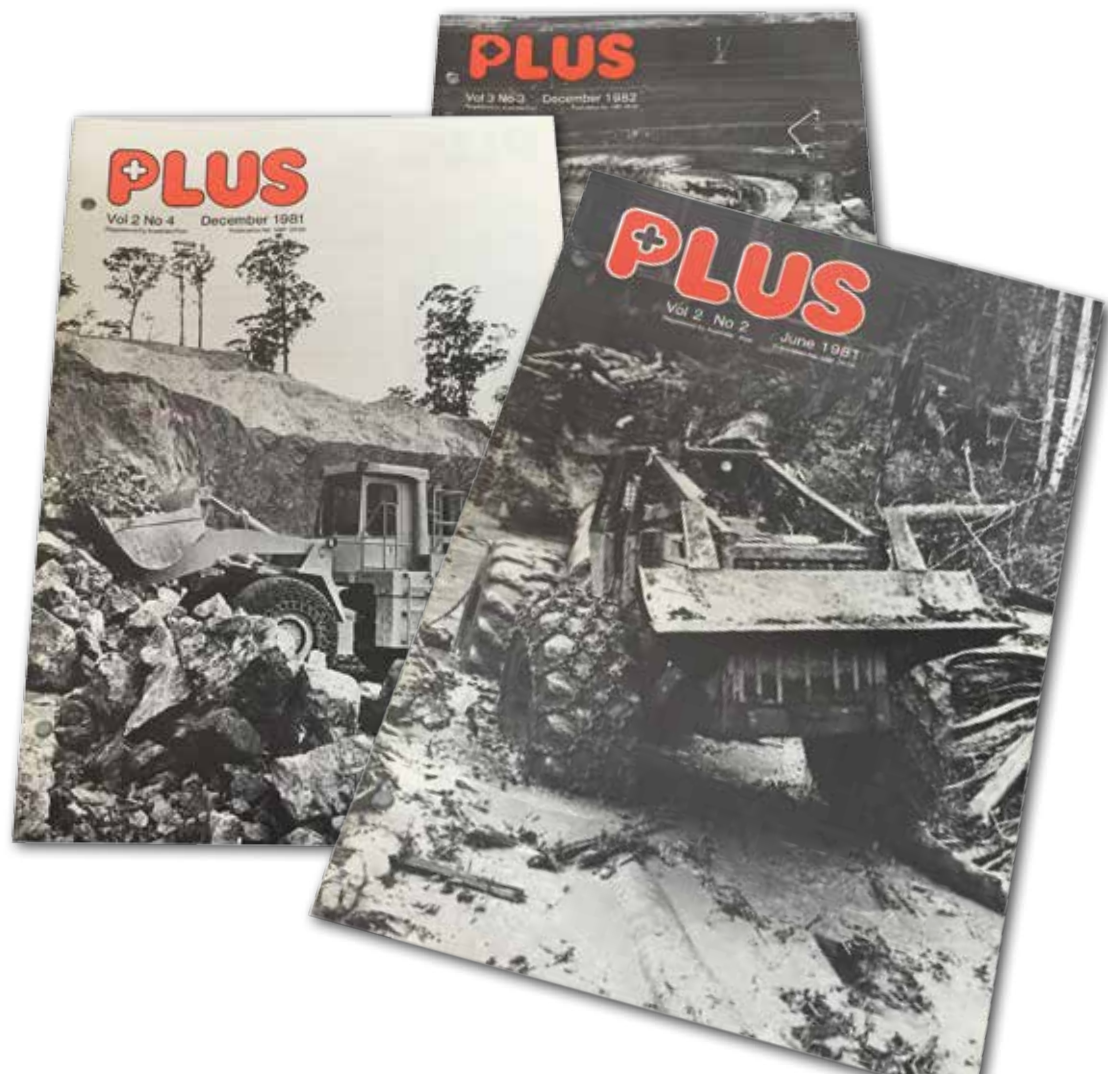
▲ A little over thirty years since Dale Elphinstone first signed the Caterpillar Sales and Service Agreement, Adam now has his signature on the document. Pictured with wife Megan, and, from left to right, Eddy Kontelj, Andrew Ransley (Mining Manager, Caterpillar) and his wife Donna, Cheryl and Dale Elphinstone, Megan and Adam, Dzung Quach (Caterpillar District Manager) and Brendon Davis (Caterpillar Region Manager).



▲ Dale and Adam, with William Adams' Managing Director, Eddy Kontelj

PLUS MAGAZINE APPROACHES A 40 YEAR ANNIVERSARY

IF YOU THOUGHT THAT THE WILLIAM ADAMS' PLUS MAGAZINE HAS BEEN A CONSISTENT VOICE PIECE FOR OUR INDUSTRY, AND FOR WILLIAM ADAMS AND CATERPILLAR MORE SPECIFICALLY OVER MANY YEARS, THEN YOU'RE RIGHT. MARCH NEXT YEAR WILL SEE PLUS REACH A 40 YEAR ANNIVERSARY, WITH THE FIRST EDITION HITTING THE MAILBOXES OF OUR CUSTOMERS THROUGHOUT VICTORIA AND TASMANIA IN MARCH, 1980. WILLIAM ADAMS HAS BEEN PRODUCING PLUS CONSISTENTLY EVER SINCE.



Whilst at times in PLUS history, the magazine was produced more often, over the past decade, two editions per year, Summer and Winter, has now become the norm.

Rod O'Loan, then William Adams' Managing Director, wrote in the magazine's first editorial, "I am delighted to introduce this first issue of PLUS, the news and information magazine of William Adams Tractors. I hope you will be as enthusiastic about its format as I am when you read through it.

PLUS is a communication magazine, providing information about Caterpillar users, their successes and their means of overcoming problems.

It's about new, sometimes better, ways of tackling a task. It's also about the owners and the operators themselves, and their techniques and ideas.

In this, and subsequent issues of PLUS, we will be keeping you, the equipment user, abreast of developments within the industry. We will also be reporting on a wide range of projects in both Victoria and Tasmania, in a way which we are confident you will find both highly readable and informative.

We believe that PLUS will in some way, help contribute to the successful operation of your business."

Almost forty years on, and the recipe and format have changed little, and we hope that today, the 10,000 William Adams' customers who receive our PLUS magazine, enjoy flicking through its pages, and learn a little about our products and how our customers may be utilising them - from Technical Tips to New Product Introductions, Plus Camera features and Customer Profiles.

In March 1980, PLUS featured the new Cat 930 Wheel Loader, loading waste paper at APM Fairfield, now the site of a major residential development on a 16.5 hectare parcel of land currently being developed for the expected 2,500 dwellings; Amcor (formerly APM) ceased operation of its paper and recycling operation here in 2013.

The Myrtleford (Vic) based forestry event, F.I.M.E was just around the corner, and Conexpo, after debuting in 1975, was to be held in Houston, Texas in March of 1981.

PLUS incorporated colour, at least for front and back covers, in 1990, then featured spot colour increasingly until a full colour print in 1998, and has grown somewhat in content over the years. We are delighted that the strategy and vision established by Rod O'Loan and his team back in the late 1970's, continues to be delivered to our customers via PLUS in 2019.

PETER BARRO

AN ENDURING LEGACY



Peter Barro was born on 29th June 1957 and passed away 25th October 2018. Peter's passing will leave a loss for his wife, Christine, his sisters Rhonda, Elena and brother Raymond, the Barro Group employees and the quarrying industry as a whole. Peter was an Executive Director with the Barro Group and was instrumental in securing strategic stone and sand resources, positioning the company in a strong position for decades to come. Peter's legacy to the Barro Group, his family and the extractive industries will endure.

Peter was always destined to follow in his father's footsteps and started work in the laboratory at Bacchus Marsh quarry and in different roles at Point Wilson and Sunshine quarries. Peter's formal training in the extractive industry was complete when the Quarry Manager's Board in Victoria issued Peter with the Quarry Manager's Superintendent certificate, which allowed Peter to manage any quarry in Victoria.

Peter had found his niche within the family business and the skills he brought forward have and will benefit the company for many years to come. The identification, retention and development of the Barro Group raw material assets and his passion and personal involvement in crushing plant selection, design and output were outstanding contributions. One could see in the most recent plants an artistic flair, with respect to both shape and blending of colour in the processing plants layout.

You were well aware of the pride and respect Peter held for his late father David and Uncle Mark as well as his wife,

siblings and Ian Alexander when it came to the outcomes being achieved by the family business. In conversations with Peter, he would always associate the Barro Group as a private business in competition with the public companies. He identified with and was extremely proud of the humble beginnings of the family's business, the significance of its loyal workforce and its managers.

Peter understood the important role that small businesses play in the economy and he was always willing to help those business partners to survive. Over the years Peter was able to forge long partnerships that were based on respect, loyalty and trust. Peter's "yes we can" attitude delivered fair outcomes for the Barro Group and its partners.

Peter has been driving the innovation of sand extraction below the water table without having to dewater the sand pits. With the shortage of sand resources for the booming infrastructure projects in Victoria, the approach would provide much needed sand resources which can be extracted with a much smaller footprint and less impact on the environment and ground water resources.

Peter was acutely aware of the economics for the extractive industry and was always prepared to take on the governments of the day in relation to unnecessary red tape, access to resources and the approval process.

Peter articulated the benefits of a strong quarrying industry

to infrastructure projects and Victorian economy and the community.

When you met Peter, he would smile, lean forward and physically draw you into the conversation. It was always evident that he had a deep knowledge of the industry and its participants. He was inquisitive by nature and always searching for information. Peter was charismatic, charming, funny, and innovative. He was the negotiator, the deal maker and loved nothing more than spending time in the field with his people, his plant and his sand pits and quarries

Peter loved people, he was gregarious, and the guy everyone wanted to be with. He was happy in any company – whether it be catwalks and fashion shows supporting Christine, quarry and industry events, wining and dining with Melbourne royalty, or generously supporting charities at a Spring Racing Carnival.

Peter was an amazing Dad to young David, a loving husband to Christine and was very proud of Christine's achievements, her recognition within the fashion industry, her business acumen and her personal inner strength. Peter's generosity and fun-loving spirit knew no bounds.

Christine's heart felt words in the "celebration of life" distributed at Peter's funeral gives us an insight into the loving marriage and Peter's ability to bring light and laughter to the darkest point of the room. He brought people together, marrying one talent to another's resources.

He was "the connector"; the man who took no credit for the clever couplings that often bore transformative results. Peter's obsessive want to drill down to the smallest technicalities of stuff, earned Peter the tongue in cheek title of "The Minister for Detail".

Be it in making of wine, the signing of a commercial contract, or the creative design of a new quarry, he always believed that a rigorous attention to the micro detail made for the macro success.

Peter loved people, he was gregarious, and the guy everyone wanted to be with.



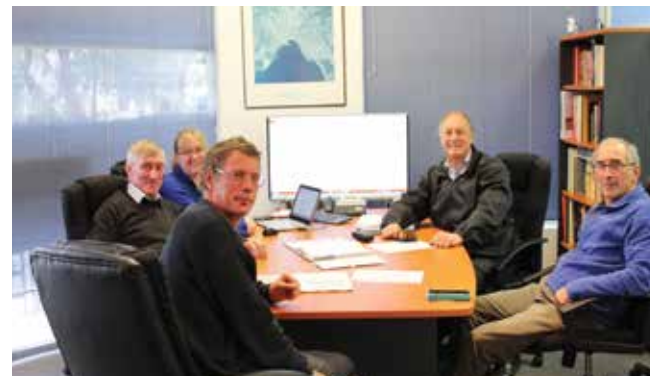


Peter loved colour – he spent a lot of time in black, but he was spectacular in colour, and wore it well. He literally lit up a room. Peter’s presence always ensured the event went up several notches, and conversely, was not quite the same without him. Peter was a National Treasure and Industry Icon.

We will reflect upon the loss of Peter’s presence, his wisdom, his social and culinary skills, his distinctive welcoming voice, his sense of humour, his interest in his family’s wellbeing and finally our industry’s general wellbeing. For all of us who knew Peter it will endure for the rest of our lives.

The article was prepared from extracts prepared by Christine Barro, Ron Kerr, and Bruce Edwards and from interviews with Basil Natoli, Mike McCann, Rob Snowden and Craig Cahill.

PLUS would like to thank CMPA and Sand & Stone for allowing us to reprint this article.



His need to find a better way was all consuming, but when he did conceive of smarter “doing” and determined that he would bring it to immediate fruition, proved all the naysayers wrong. Though, he never sought to laud it over anyone. He just loved the game of it all shaping and shifting the landscape of accepted norm, be it in business, design or a distant town.

Peter would see the food industry in action and want to replicate it with his own genius inventions, for example the wood-fired oven that he designed in dry-stone in Merrijig located at the base of Mount Buller. From the inner glow of its beehive dome, Peter would feed his tribe with a spread of Saltimbocca that slid into an evening smorgasbord of pizza. The locals would drift in and out, indulging in Peter’s hilarity, gourmet hospitality and good advice on how to run a business and a local bureaucracy.

For serially agitating them into civic activity, they declared Peter the default Mayor of Merrijig, a title that he indulged with full authority each and every Easter, when his four-day festival of eating and drinking drove into town and turned it upside down with more constructed follies and counselling on business.



NEW CAT 745 PURCHASED BY MDG HIRE PTY LTD WORKING AT TASMANIA MINES AT HAMPSHIRE ON TASMANIA’S NORTH WEST COAST

Tasmania Mines produce a high grade of Iron Ore and Tungsten with the 745 used for carting waste and ore at the mine.



FIRST CAT 336 IN VICTORIA TO MATTHEWS QUARRIES



Matthews Quarries is a family owned and operated business supplying quarry products across Victoria. From humble beginnings as a single truck operation, K & RJ Matthews have steadily grown to now delivering in excess of 600,000 tonnes of crushed rock per year.

Matthews Quarries are located in Tyers, in Gippsland’s Latrobe Valley, and together with sister companies, Latrobe Valley Concrete and Latrobe Valley Sands, offer construction material solutions for customers throughout Gippsland and beyond.

In December, Rob, Graeme and the team at Tyers took delivery of Victoria’s first Cat 336 NextGen Excavator. The location of the William Adams’ Traralgon branch nearby, the fuel efficiency savings demonstrated by the Next Gen machines, supported by the exclusive Cat Fuel Guarantee offer, and the technology features included in the 336 were key factors in a return to Cat for Rob and Graeme. K & RJ Matthews are also founding member of the Construction Materials Processors Association (CMPA).



NEW CAT 730C2 GOES TO WORK ON WEST COAST

A new Cat 730 purchased by Triffett Contracting Pty Ltd working at Tasmanian Advanced Minerals Silica mine at Corinna on the West Coast of Tasmania.



GRADCO BENEFITS FROM CAT NEXT GENERATION EXCAVATOR FEATURES

Since 1955, Gradco has firmly established itself as a leader in specialist contract mining, civil construction, environmental and heavy haulage services, not only in their home state of Tasmania, but throughout Australia.

Gradco is renowned as a leader in the delivery of civil construction projects and specialist mining services, having a strong focus on delivering flexible and cost effective solutions for their clients. "Gradco's position within the industry has been established through a willingness and ability to undertake projects with varying degrees of complexity", Managing Director, Oliver Diprose recently told PLUS.

"Our business is committed to continually investing in innovative and technologically advanced equipment, ensuring we lead the industry in applying the very best techniques and processes to all aspects of project delivery".

"Our extensive fleet of plant and equipment guarantees we have the capacity and capability to take on any project. Our end goal is ensuring that our clients' expectations are exceeded"!

At Gradco we are fully committed to engaging the best people, providing the most reliable and productive plant and equipment, and ensuring we have an innovative approach to operations and problem solving. Above all else, flexibility to deliver optimum outcomes for our customers and clients", Oliver told PLUS.

PLUS had the chance to spend time with Oliver and the Gradco team soon after their latest Next Generation Cat Excavator was delivered to site in mid-2018. Oliver provided a great insight into the third generation family business, together with his thoughts on the new Cat 323.



"Along with my two brothers Tom and Will we own and operate Gradco. We are a civil construction business based here in Tasmania. We operate all over Tasmania in many sectors, from road building, quarrying and all sorts of civil construction. Gradco has now been operating in Tasmania for 64 years. My brothers and myself are the 3rd generation to be operating Gradco, we are very proud of our heritage here in Tasmania and what we are achieving".

"We are using the new Cat 323 on our civil sites, we're doing a lot of final trim work with it, batters, drains and a lot of detail excavation and finishing work around our various sites".

"The thing that surprised us most about the Cat 323, was the operator station. The comfort levels within the cab, how quiet it was and how good it was to operate for our guys.

They love operating the Cat excavators and the 323 in particular has taken this to a whole new level".

"In terms of maintenance, our mechanics and technicians love working on the Cat 323. It's easy to climb onto with the access to the right hand side of the machine, and all of the ground level checks make for safer and simpler maintenance. Everything is accessible, and it allows them to do their job a lot faster too".



"The two standout safety features for me on the Cat 323 is the visibility from the cab - there is a lot more glass; that along with the camera system is just amazing."



"We are using the technology in the machine to its max. We're using 'Payload' a lot when loading tippers on road works jobs and we're using 'Grade Assist' when we're final trimming batters to fine tolerances. The technology in this Cat 323 is making the machine very very productive".

"The two standout safety features for me on the Cat 323 is the visibility from the cab - there is a lot more glass; that along with the camera system is just amazing. Looking on the large monitor you can see people coming into your work area, or other machines or objects in the vicinity. Our guys really appreciate these two safety features".

"For others considering a machine like this, we would definitely recommend they have a good look at the 323. We have enjoyed some good savings having this machine and the operators love it. You would be mad not to at least have a look".

"We have a great relationship with William Adams. They support us and our machines very very well, and the Cat 323 is no exception. They have supported us from the beginning and really helped us a lot. They have gone the extra mile sending people out, helping us train our people with the new technology - it's been really good".

PLUS would like to thank Oliver and his team for continuing to support Caterpillar and William Adams, and specifically for taking time out with us to share their early observations on the Cat Next Generation excavator product.

Gradco operate approximately fifty hydraulic excavators from 1.5 tonne to 90 tonne operating weight, so we believe Oliver speaks with some authority when commenting on the latest technology from Cat. William Adams is proud to have enjoyed such a strong partnership with this leading Tasmanian organisation for over thirty years.



Australian Antarctic Division's latest purchase, a new Cat 313FL arriving at Macquarie Island to assist with the construction of a new research station.

The machine will initially help with demolition and preparation of the site for the building of all new science and accommodation facilities, the originals having been on the island since 1948.

Macquarie Island is equidistant between southern Tasmania and Anderson Peninsula on the Antarctic Continent. The island is 34 kms long, and 5 kms wide at its widest point. In good weather, it takes about three days to reach Macquarie Island from Hobart.



WILLIAM ADAMS HOST IQA TECHNICAL NIGHT

William Adams hosted the annual Institute of Quarrying Summer Technical Night at our Laverton branch in February. Over 70 IQA guests were given a welcome from Chairman Ryan Flack and an insight into the 2019 events program.

Guests enjoyed dinner, drinks and two technical presentations:

Kevin Smith of Propeller Aero presented on drone technology and processing software, giving an insight into its capability for quarry sites, whilst Boral Quarries' Ben McGrouther presented on his experience as a project engineer commissioning Boral's largest quarry in Victoria.



EXTON'S MOTOR GRADER MILESTONE

Even after one hundred Caterpillar Motor Grader deliveries, Roy Exton still had that look in his eye, the same look as anyone would get when their new shiny Grader arrived ready for its first day on the job.

Fortunately for me I have had the pleasure of working with Roy and the team at Exton's for the past 7 years. During this time William Adams has sold and delivered countless machines in a wide range of models for jobs spanning the country. In February this year Exton's ordered a new 140M AWD Motor Grader from William Adams, making this their 100th Caterpillar Motor Grader to come through their business, an amazing feat by any standard and one both Exton's and William Adams are very proud of.

The business founder Roy Exton was born in Benalla in July 1927, grew up on a farm just outside Benalla and left school at the age of 14. His first paying job was catching rabbits and selling the skins to a local skin merchant and the carcasses to the local butcher. "You had to be quick, real quick" Roy told me one afternoon when I quizzed him on his rabbit catching technique. "Not sure I'd be able to pay the bills doing it now" he chuckled...

At the age of 16 Roy managed to land a job working for a government agency called Manpower doing various maintenance duties at places such as the Benalla Airport,

and later went on to work for the CRB (Country Roads Board) in a similar role.

When a job came up working at Falls Creek as an offside dozer operator Roy jumped at the opportunity and began learning the skills involved in operating an Allis Chalmers HD15 Dozer, and later, the first Caterpillar D7 3T Dozers arrived and Roy's love for the Yellow Iron was born. Roy and his wife June were married in 1953. Roy was still operating Dozers for the CRB and Water Authority's until he and his brother purchased a local contracting business in the late 50's. Both Roy and his brother worked on various jobs in the local area including the rail link from Albury to Melbourne and during the first few years were the proud owners of a Cat 12E Pilot Start Motor Grader, a Cat 922A Wheel Loader and a D6C Dozer.

In 1983 Exton PTY LTD was formed. Roy and June have since retired and Exton's P/L is now owned by Ian and his wife Anna. Exton's currently employ 45 staff including Ian, Anna and their two sons, Harrison and Thomas along with 45 locals, many of whom are long standing employees of many years.

Congratulations to the Exton family business on the arrival of your 100th Caterpillar Motor Grader.

Story authored by Wynton Brown, William Adams' Territory Manager for North West Victoria.



NEW 140M AWD FOR WALTERS CONTRACTING



Deloraine (northern Tasmania) based Walters Contracting Pty Ltd, recently took delivery of a new Cat 140M AWD Motor Grader, and is pictured preparing the Prosser Forest Road near Lilydale ready for sealing.

The 140M AWD is equipped with Topcon 3D GPS + 3D Machine control.

Senior William Adams' rep, Mick Hardy commended the Burnie workshop on the great presentation of the new 140M, which looked superb on delivery.

Three months after the 140M delivery in February 2019, a new CAT 323 was also delivered to Walters Contracting, pictured extending a dam at Lower Barrington, South of Devonport in North West Tasmania.

Rick Davey, the 323 operator was blown away with the comfort the 323 offered and he made the comment:

"it will make my job a lot more enjoyable and efficient with all this technology"



BORAL DELIGHTED WITH NEW CAT 374FL

PLUS recently caught up with Boral Australia National Heavy Mobile Equipment Manager, Brad Rooney, who was happy to share some early thoughts on the company's recent purchase, a new Cat 374FL.

"Boral Australia purchased a new Caterpillar 374F L Hydraulic Excavator for our Dunnstown Quarry given the unique application of loading an in pit crusher as opposed to traditional rigid haul trucks. The Metso LT125 requires a certain machine to maximise productivity through the fixed plant. The Caterpillar 374F L delivers the best combination of operating weight, height, reach and capacity to match the maximum observable rate of material through our crusher", Brad told PLUS.

"The Caterpillar 374F L comes with a number of standard features like Product Link, 2D Grade Control and Cat Production Measurement (CPM or integrated payload) to genuinely assist our operator to minimise fatigue and maximise production for the whole operating shift".

"Diesel fuel is a significant part of the Whole of Life cost of a machine and in the short time Boral has owned the Caterpillar 374F L at Dunnstown fuel consumption has been lower than the number estimated by Jason Rudge, Quarry Account Manager at William Adams. Boral Australia are really pleased with this purchase and it proves that if you put good equipment in the hands of a good operator you can really achieve great productivity at the lowest cost per tonne".



WALSH BALLARAT QUARRIES CHOOSE M SERIES

Walsh Ballarat Quarries is a privately owned and operated family business that was started in 1980 by Leo Walsh, who opened his first quarry in Dunnstown, 15kms east of Ballarat.

After 15 years of thriving business in the earth resources industry, Walsh Ballarat Quarries then opened a second quarry site in Learmonth, to the west, in 1995.

Both quarries produce a high quality aggregate and crushed rock material.

Leo Walsh chose Cat Wheel Loaders in the early days, taking delivery of a 966F in 1991, followed by a 970F in 1995. Leo's son Raymond updated from the F Series to a 972G in 2001, and then followed up with the new model 972H in 2007.

Fast forward to 2019, and the 972H has accumulated over 17,000 hours, and Cat have now released the M Series..... and Raymond's son Luke has been installed as Quarry Manager !

The new Cat 972M Aggregate Handler was delivered to the third generation of the Walsh family in March 2019. Equipped with a 4.2 metre General Purpose Bucket, it has already proven to be the ideal pass match for typical on highway truck configurations.

The Cat C9.3 ACERT engine offers increased power and is proven to be up to 10% more fuel efficient than K Series and up to 25% more fuel efficient than our H Series loaders.

A best-in-class operator environment provides unmatched comfort, visibility, and efficiency, and combines with technologies including:

- Cat LINK: VisionLink® enables owners to access data wirelessly to monitor machine health, utilisation and location.
- Cat DETECT: An integrated rear vision camera enhances visibility behind the machine to help operators work safely. Cat Rear Object Detection increases operator awareness of the working environment which enhances site safety.
- Cat PAYLOAD: Cat Production Measurement 2.0 brings simple and accurate on-the-go payload scale allowing operators to deliver exact loads and work more efficiently.

“Versatility, even pass match and fuel economy make the 972M Aggregate Handler the right choice”, according to Luke Walsh.



CHRISTMAS COMES EARLY, FOR SOME...

Christmas came early for Bairnsdale based Whelans Group Investments, with the delivery of two new Cat 12M Motor Graders, two new Cat 432E2 Backhoe Loaders and two new Cat CS533E Smooth Drum Vibratory Rollers in mid-December.

Pictured taking delivery are Charlie Whelan, Managing Director, and son Andrew, on a section of the Princes Highway duplication between Rosedale and Sale.

The graders and rollers were delivered to another section of the Highway duplication west of Bairnsdale, in East Gippsland.

The Whelan Group have been involved in the reconstruction of a significant section of the highway since early 2018.



BIRTH OF A NEW INDUSTRY LEADER CW12 PNEUMATIC MULTI TYRE ROLLER

Back in early 2016, Caterpillar Paving Territory Manager, Chris Powell, in consultation with then William Adams' Territory Manager, Nick O'Doherty, saw a gap in the Pneumatic Roller market.

This gap was primarily based on safety requirements and our observations that our customers were routinely looking for ways to eliminate the need for their operators to continually look over their shoulders when rolling asphalt, as they were forced to do on the Cat PS150, and competitive units currently out in the marketplace.

A coroner's report published in 2015 following a workplace fatality in 2008, stated that there needed to be a machine introduced to the market with a 360 degree swivel seat. Caterpillar and William Adams accepted this challenge and sat with design engineers over at the Minneapolis (USA) factory and started to rough together some specs on what the machine should look like.

Fast forward 24 months, and the outcome was that the first CW12 Roller was presented to customers in our region at an AAPA function held at the Melbourne Exhibition and Convention Centre in August 2017.

The CW12 Pneumatic Compactor is a 7 wheel multi tyred roller that excels on chip and seal applications as well as asphalt, and granular materials. The machine offers superb visibility thanks to the 360 degree swivel seat which also slides from side to side for optimal wheel edge visibility.

The C4.4 engine provides 100hp, and coupled with hand-wheel steering, touch pad machine functions, Eco mode, and automatic speed control helps the operators perform efficiently.

Cat Compaction Control keeps the operator informed for higher performance and efficiency. Keeping track of coverage areas and the number of passes made helps ensure quality results. Infra-red temperature sensors combined with mapping when working on asphalt, keeps operators informed of when and where optimal temperatures exist.

These Compactors are fitted with an industry leading water spray system and features a single fill point, dual water pumps, triple filtration, intermittent operation and high capacity for optimal performance.

The "12" in CW12 relates to the 1.2 tonne per wheel spec. The units are fitted with 14/70 R20 large square tyres providing 88mm of overlap, and has been based on the CB44B frame (Caterpillar's steel dual drum roller). The machines are available in a canopy as well as cab configuration, and also come with tyre scrapers fitted as standard to prevent material build up on the tyres.

William Adams now has several of these machines working in our territory today, and the feedback to date has been extremely positive. We are delighted to have had some small part to play in the advance in machine technology assisting our customers to produce top quality projects and finishes, and above all else, keeping operators, motorists and our communities safe.



J & S ASPHALT "TRY'S BEFORE THEY BUY"

Wandin East is located in the green hills beyond Melbourne's Yarra Ranges, an hour east of the CBD, and is home to Joe Bonanno, Owner / Director and his team at J & S Asphalt Pty Ltd.

J & S Asphalt are a family owned business with over forty years of experience. Joe supervises the jobs, his wife Sharon is the company's CEO, Estimator and Administrator, their two boys, Michael (Foreman) and John are hands on with the outdoor crews, whilst their daughter, Teneshia is also involved with the business in an administration capacity.

J & S Asphalt had made the decision recently to add a new asphalt paver to complement their existing fleet of four excavators (up to 15 tonne), skid steers, vibratory rollers and tippers. Before making their final selection, the decision was made to hire a Cat AP500F from All Ash, located in nearby Silvan, to make sure it was up to their expectations. All Ash took delivery of their new AP500 in early 2017.

Not only did the machine perform above expectations, Steve Galea, owner of All Ash, provided a glowing reference.

J & S took delivery of their latest addition, the all new Cat AP500F in January 2019, which will no doubt enhance their ability to deliver on projects from commercial road construction, car parks, schools, driveways and other commercial and domestic repairs.



FROM THE FERTILE SOILS OF THE NORTH WEST COAST TO THE RED DIRT OF THE TANAMI

New Home for Harvest Moons' Old MT765D Challenger Tractor

In November 2018 the Tasmanian Ag team (Brent Gillard) sold a used Challenger MT765D Rubber Tracked Tractor through a Burnie based consultant to a gold mine located in the Tanami Desert of the Northern Territory.

The tractor was originally owned by a farming and cropping business on the north west coast of Tasmania and was very well maintained and serviced.

The mine is located about 1,200 Km South of Darwin or 540 Km North West of Alice Springs - a very remote part of the Northern Territory. Some 1,450 employees and contractors are employed by the mine; the camp is quite comfortable with a great "Dry Mess" and a very well-run "Wet Mess", according to our Chris Munday, who is very well versed in these matters !

The land known as "The Granites" is owned by the Aboriginal Warlpiri People and the name for "The Granites" in Aboriginal is Purrkijji.

The Challenger tractor was in very good shape and the mine was very impressed with its presentation, borne out by comments that they thought it was a new machine not a used one !

As part of the machine sale, operator training was provided, which resulted in our Tasmanian Operator Trainer Chris Munday heading to site for 3 days to provide training

for the sixteen operators and maintenance people, along with 2 Operator Trainers. All the personnel trained on site were very enthusiastic, and excited to have a new machine on site that was very easy to operate.

The machine will mostly be used in the wet season to tow vehicles out of the bogs, as well as assisting with towing fuel tankers etc around the site. The red dirt in this area turns to very sticky, slippery wet red mud instantly when it rains.

This machine was purchased to replace a very old, very run down Challenger 85C Tractor.

"I met some great people on site and it was a pleasure to provide the training which was very well received by the site", Chris told PLUS recently.



Situated on the North West Coast of Tasmania, Harvest Moon was one of the first to purchase the new 700 series Track Tractor in Australia, and the first and only in Tasmania to date. This is Harvest Moons' 5th Track Tractor purchase, but the first fitted with the variable speed transmission which is a huge bonus to them.

Previously, the slowest speed possible was 2.3 km/hour, now Harvest Moon enjoy the flexibility to rotary hoe at infinitely variable speeds well below this.

CHALLENGER INTRODUCES THE NEW 700 SERIES TRACK TRACTOR TRANSMISSION

Ag Sales Manager, Wayne Elphinstone represented William Adams on an Australia / New Zealand dealer tour of the new, upgraded factory in Jackson Minnesota in 2018, and the launch of the Variable Transmission in the 700 Series Challenger Track Tractor.

The new model enjoys significant product enhancements not limited to the new transmission arrangement, which provides many advantages over competitive models.

The facility was first constructed in 1973 by Al McQuinn, founder of what is today the application equipment division of AGCO, and produced the industry's first self-propelled sprayers. The factory has undergone renovations and expansions over the years to keep up with the growing demand for application equipment.

In 2002, the first tractor assembly was brought to Jackson, with the new line built to handle the Challenger track tractors and articulated 4WD tractors. Most recently, in 2011, the tractor assembly line underwent a 75,000 square foot expansion to bring wheeled row-crop tractor production to North America for Challenger.

The factory has grown from the original 150 workers employed in 1973 to approximately 950 employees today.

AGFEST MAJOR SITE AWARD WINNERS

William Adams Ag won the best Agricultural site award for Agfest 2018.

William Adams combine all the sales businesses together displaying Agricultural tractors and implements along with Caterpillar Fork Lift Trucks, distributed by United Forklifts, and of course the Caterpillar products.

“This was a great team effort across all divisions, and whilst we don’t go to Agfest to win these awards, it is certainly nice to be recognised as there is plenty of planning and hard work that goes into setting up for a show like Agfest”, Ag Sales Manager, Wayne Elphinstone told PLUS .



WATERS PLANT HIRE GO GREEN.....



Mildura based Waters Plant Hire are a very loyal Caterpillar customer, but have recently migrated from yellow to green after purchasing a new Deutz 9340 TTV from the William Adams Ag Team.

The 9340 is the largest tractor in the Deutz range and is being used in conjunction with a 9 tonne profiler. The tractor is equipped with a variable speed transmission which is being

used at a speed of approx. 300 metres per hour when profiling.

The water cart (pictured) is pushed by the tractor, and pumps up to 400 litres of water per minute into the reclaimed road base material.

The profiler can work in rock up to 50mm in diameter and to depths of up to 350mm.

The Deutz 9340 is a new model in the 7 Series range, and is fitted with a 7.8 litre 6 cylinder diesel engine which produces 340HP. It has an operating weight of approx. 12.5 tonne.

WILLIAM ADAMS AG, SHEPPARTON ACHIEVE PLATINUM STATUS



Only four branches in Australia have met the criteria to become a Deutz Platinum Dealership.

Our Shepparton Branch has been recently crowned a platinum dealership. Branch Manager Christian Barnett commented “It is a great incentive for the dealership itself but more importantly for our customers.”

“As a platinum dealership, William Adams has achieved excellence in Product Support, Aftersales Service, Dealership Identification & Sales Promotion, providing customers the confidence they are getting good advice when purchasing, as well as the right after sales care,” said Christian.

L to R - Christian Barnett – Branch Manager, Daniel McGuire –Service Manager, Mark Lewis – Sales Representative, Darcy D’Augello – Branch Administration.



Pictured - Richard Ziller of Ziller Pastoral in Wodonga taking delivery of his new Deutz 5130TTV.

Parked beside it is his original Deutz D7807 that has been faultless throughout its service life – it only had one fault, “it didn’t have a comfortable enclosed cabin”, said Richard.

INTRODUCING BRADYN HEWITT



Bradyn Hewitt joined the Ag Team in January, and is based at our Swan Hill branch.

Joining William Adams after several years' experience in the Ag industry has made for a relatively easy transition for Bradyn, and he is very excited to learn our Ag product range and get out and meet our existing and new customers.

Bradyn worked in the local John Deere dealership as a Precision Ag Consultant for the past five years, and prior to that filled positions including Ag Sales Representative and originally Diesel Mechanic.

Away from work Bradyn enjoys spending time in the fishing boat (although he claims he spends most of his time rebaiting the kids' rods), camping and touring Australia.

Welcome Bradyn.

INTRODUCING MATTHEW SCHOFIELD



Our new Hobart rep Matt Schofield joined William Adams in September, 2018. Coming from a marine background, Matt has found the adjustment a steep learning curve, but rewarding none the less.

Matt's first six months have been packed full of training, getting around customers in his patch, and hosting customer groups on visits into William Adams, Hobart, to look over the comprehensive product range on offer. As PLUS was going to press, Matt was getting over his most recent visit from around thirty five potential, and existing customers.

Well done Matt.

Away from work Matt enjoys anything to do with the outdoors - boats, bikes and 4wds.

INTRODUCING MITCHELL BEER



Our latest addition to the Ag sales group is Mitchell Beer, whose previous role was in Ag Field Service, so product knowledge will be no problem to Mitch as he makes his transition into Sales.

Mitch joined our group in February 2019. Over the summer months Mitch risks life and limb as a clown at all the Tasmanian rodeos, so hard work, dirty hands, dust and the occasional kick or two won't be strange to Mitch's daily routine !!

Mitch also enjoys shooting and some fishing as he resides very close to Tasmania's main fishing lakes.

ELPHINSTONE COMMENCES GLOBAL DISTRIBUTION OF UNDERGROUND MOTOR GRADERS.

Elphinstone Pty Ltd located in Tasmania's North West are leaders in the innovation and design of underground mining support vehicles.

In 2017, Elphinstone identified an opportunity to expand their growing range of underground support vehicles to include an access clearing vehicle, based on the current Caterpillar 120K and 120M surface grader platforms.

The key role of the underground grader is to provide safe, consistent access throughout the underground tunnel network, ensuring all production, support and light vehicles can move freely in a safe and controlled manner with optimal efficiency. The added benefit is the improvement to the production fleet tyre life due to well-maintained haul roads.

Elphinstone initially acquired the IP for the UG20M and UG20K underground graders from Ground Force, before further refining and customising these existing platforms to ensure compliance and performance in the harsh and demanding underground environment.

The Elphinstone name is synonymous with safety and the graders are no exception. Safety interlocks on door and seat belt are standard to prevent vehicle start-up. The operator's cabin has been redesigned to a lower profile certified ROPS / FOPS and great attention has been given to cabin ergonomics, visibility and operator comfort. Entry and exit to the operators cabin and maintenance points are via ergonomically positioned handrails (can be colour highlighted) and steps offering 3 points of contact.

Lighting for operator and oncoming vehicle vision is enhanced with LED work, brake and indicator lights and rear camera (additional cameras can be installed for 360-degree vision). Fire suppression systems are available, additional to the fire-resistant wiring looms. A robust rear guard is installed to provide rear protection to the machine and the front of the machine features a counterweight for machine balance.

Operation and manoeuvrability are enhanced via a shortened gooseneck frame and mouldboard resulting in improved turning radius with the standard articulation features of the grader. Mouldboard lift cylinders and exhaust have been redesigned to a low-profile configuration. Maintenance, technical assistance and access to spare parts is simplified through the Caterpillar Dealer Network worldwide and the Elphinstone Product Support team.

In just two short months after receiving the first Cat 120M Series grader, the first Elphinstone UG20M Motor Grader was rolled out ready for shipping to Mongolia, shortly followed by the first Elphinstone UG20K Motor Grader bound for South America. Subsequent orders have been received and delivered to Canada, North and South America, Mexico and Russia highlighting the market acceptance and need for the innovative, safe and operator friendly design by Elphinstone Pty Ltd.



CATERPILLAR PRODUCES 40,000TH LARGE DOZER

40,000

The legacy of the Cat large dozer began a little more than 40 years ago with a revolutionary elevated sprocket and new undercarriage design that looked unlike any dozer of its day. The groundbreaking suspended undercarriage with high drive design conformed to the ground better than standard oval tracks, helping to improve machine traction, extend undercarriage life and enhance operator comfort.

In October, representatives from Caterpillar Inc., Finning Canada and Teck Resources Limited (Teck) gathered in East Peoria, Illinois, to celebrate the milestone of the 40,000th Cat large dozer rolling off the production line. Core to Caterpillar's global identity, the current Cat large dozer line includes the D9, D10 and D11 models.

Commenting on the importance to Caterpillar of the 40,000th large dozer milestone, Greg Hepler, product manager of large dozers, said, "Caterpillar transformed the track-type tractor with the introduction of the suspended undercarriage with elevated drive sprocket. This innovation, along with a long history of others, enabled Cat large dozers to set the standards for efficiency, productivity and durability. These iconic machines continue to define who we are and play a key role in building a better world."

Denise Johnson, Caterpillar group president responsible for Resource Industries, handed the keys of the 40,000th large dozer to Louis DeLuca, Teck director of supply management. The celebration included employees in Caterpillar's Building SS, where all 40,000 Cat D9, D10 and D11 dozer models have been manufactured. For more than 10 years, Teck has been one of the top customers in the world for Cat large dozers.

The 40,000th large dozer, 102,058 kg D11T, will operate in the Elk Valley Region of British Columbia, where the company produces steelmaking coal at five mining operations.

The world's second-largest seaborne exporter of steelmaking coal, Teck currently operates significant numbers of Cat dozers, each of these high-production machines logging up to 7,000 operating hours each year in the mines. Teck's newest D11T will be used for production dozing, dump area support, mining shovel support and haul road development.

Teck



TWO NEW ULTRA-CLASS MODELS JOIN CAT® LARGE MINING TRUCK LINEUP



Caterpillar continues to grow its large mining truck offerings and recently announced the addition of not just one, but two new electric-drive models to its ultra-class lineup.

Caterpillar customers and Cat® dealers got a first look at the new machines during a recent mining truck program held at the company's Tinaja Hills Demonstration & Learning Centre near Tucson, Arizona, USA.

The program included the official launch of the Cat 796 AC and 798 AC ultra-class trucks. The 798 AC joins the mechanical-drive Cat 797F in the 400-ton size class while the 796 AC further expands options with a 326-tonne (360-ton) payload.

When Caterpillar introduced its first electric-drive truck, the 795F AC, the truck was the first single-sourced truck in the mining industry. With the introduction of the 794 AC several years ago, along with the two new models, the company continues to tout the benefits of being a single-provider. "Deep vertical integration is what makes us stand out," said Jeff Castelman, a Caterpillar manager in charge of new product development for trucks. The complete electric-drive system is developed and manufactured by Caterpillar. The AC powertrain of each of the two new trucks draws from

the Cat 795 AC and Cat 794 AC, which have been operating successfully for about 5 million hours.

The design of the new trucks focuses on class-leading productivity while delivering high reliability and simple serviceability. "This frame and chassis design have been proven with over 18 million hours of legacy truck operation," said Castleman.

The Cat C175-16 diesel engine powers both of the new trucks. With more than 21 million hours of operation in mobile equipment and power generation, the engine is configured to meet U.S. EPA Tier 4 emissions regulations and offers a choice of 2312 kW (3,100 hp) or 2610 kW (3,500 hp) to meet the mine's needs. To further adapt to the mine, system power is adjustable to adapt to changes in production targets and to work smoothly in mixed fleets.

According to Caterpillar, significant improvements have been made since the introduction of the 795. Castelman says the 798 AC has demonstrated a 17 percent productivity increase and 5 percent improvement in efficiency over the 795.

THE CATERPILLAR JOURNEY TO AUTONOMOUS MINING



When Caterpillar talks about autonomous mining, the company typically refers to it as a journey. It's a journey for Caterpillar as the company develops innovative technologies and autonomy-ready machines. And it's a journey for mining companies as they adopt and embrace new ways of mining.

Michael Murphy, chief engineer in the Surface Mining and Technology organisation, has been on that journey with Caterpillar since the beginning. He has worked for Caterpillar for nearly 40 years and has been a part of the company's mining technology group since its inception more than 20 years ago.

Editor's Note – Mike, an Australian, worked very closely with William Adams and many of our quarrying customers in the early 1990's before being transferred to the Mining Group in the US.

"I spend most of my time looking at where the mining industry is going," says Murphy. "What's the technology strategy, and where are customers heading?"

Murphy has been around mining most of his life and has a background in civil engineering and mining engineering. He has been engaged in all aspects of Caterpillar's mining

technology programs, including automation of large mining trucks, dozers, rotary drills and underground load-haul-dump machines (LHDs). He is a recognized expert in mining technology and autonomy and is a frequent speaker on the topic around the world.

STARTING THE JOURNEY: CREATING THE BUILDING BLOCKS

The use of automation in mining has expanded dramatically in the last decade. But the building blocks to get there started being put together long ago. Caterpillar actually began its first autonomy program over 30 years ago, starting with a research program in 1985. By the 1990s, the company had two Cat 773 trucks running autonomously in a quarry operation.

"Think of what your technology was like then — and what we didn't have," Murphy says. "A cell phone was about the size of a brick. We didn't have an iPhone. We didn't have an iWatch electronic watch. So thinking about technology in those days, it's amazing how we actually could get it to work. But we did."

The program continued for a number of years, and at MINExpo 1996 Caterpillar demonstrated two autonomous trucks running at the Caterpillar Proving Ground in Tucson, Arizona, USA.

"Many people hadn't even thought of automation in this space," recalls Murphy. "So we were way ahead. We were way out there in terms of working the technology and figuring out what it could do in the mining business. We had that early start. We had that leadership position."

And then there was a pause. "The industry really was not ready for automation," says Murphy. "We realised we were just ahead of our time. We said, 'Automation is going to come. We just don't know when. So let's be ready for it.'" "We were putting the building blocks into place, realising that one day they would be ready for automation."

REAPING THE REWARDS

It wasn't that long ago that an autonomous mine site was a far-off dream. "Today, it's reality," says Murphy. "And it's delivering. Mines are seeing significant results on the safety side and productivity side of things. Putting technology on manned machines gives you a step change. And automation takes you to the next level."

"With the addition of technologies like Fleet and Terrain in manned operations, we historically see a range of productivity improvements from 15 to 25%," he explains. "When you add automation you'll get another 20% or more. A pretty significant return on investment is possible."

Those gains are attributed to a variety of factors. Autonomous mining is more efficient, which reduces overall costs. It significantly reduces or eliminates shift change. It allows near-continuous utilisation of machines and allows them to run more consistently and in some cases faster than manned equipment. When it comes to dozing, automation makes it possible for one operator to control multiple machines. Autonomous drills allow high levels of precision, getting the hole in the right location and to the right depth. While the productivity gains are important, Murphy is quick to point out that the biggest value he sees is in terms of safety. "The mining industry is very safety-conscious and we see a step change in safety when we introduce automation," Murphy says. For example, trucks equipped with Command for hauling have moved 1 billion tonnes of material and travelled over 35 million kilometres — all without a single lost-time injury.

CONTINUING THE JOURNEY

The Caterpillar journey to fully autonomous mining is far from over, Murphy says. Research and development are ongoing, and the company continually looks for new technology breakthroughs and opportunities to collaborate with other technology leaders to bring new offerings to the mining industry.

Even though Murphy has been around mining for his entire career, and mining technology for at least half of that time, he still gets excited by what technology and automation are making possible. He says he never takes for granted being able to watch a fleet of 300-tonne vehicles running down a haul road at 60 kilometers per hour, with no operators on board.

"You still get goosebumps," he says. "When I get out there early in the morning, and it's dark on the mine site, and all you can see is these blinking blue lights that are autonomous trucks working their way through the mine site — it's a very different, eerie feeling. And that's where we are today."

OCEANA GOLD BENEFIT FROM OPERATOR TRAINING

In August, 2018 our own Chris Munday was asked to return to the Oceana Gold Frasers Underground in New Zealand to conduct underground loader operator training. The mine is located in the East Otago area of the South Island.

“I have had several trips to this mine both to underground and surface operations to provide new machine delivery and refresher training on behalf of Caterpillar Dealer, Goughs Cat, Chris told PLUS.

The recent request was to spend time with the newer, less experienced operators and offer advice and training to improve their performance and productivity.

“I also had the chance to revisit some of the other operators that we had previously trained and again offer more training and advice where necessary”, said Chris.

“Over the ten days we were able to observe and train around 30 operators”.

The mine runs a fleet of Caterpillar R2900G and R1700G Underground Loaders.

“One of our key areas of focus was to look specifically at bucket fill performance, with minimal wheel spin, and even pass matching to truck capacity. Low bucket fill rates was resulting in additional, unnecessary passes, so I spent time educating operators on correct bucket fill techniques”.



Image – One of Oceana Gold’s R2900G’s, and from left to right: Operator Glen Parker, William Adams’ Chris Munday and Oceana Gold Trainer Wayne Harris

“Another win for us was in identifying that the trucks were coming out from underground with very uneven loads (loaded to one side or minimal material to the front of the body), resulting in poor payloads of around 40 – 45 tonnes”.

“We had a really productive few days on site with the team, and as usual, the training department were extremely helpful and enthusiastic. Without Oceana Gold’s trainer, Wayne Harris, I could not have achieved the results that we enjoyed”.



CATERPILLAR 140M RUNS 20,000 TROUBLE FREE HOURS

RTL Mining and Earthworks is a large Mining and Earthmoving contractor located in the Latrobe Valley with the majority of their work connected with the power industry. RTL purchased one of the first 140M series Motor Graders sold by William Adams in December 2007.

The 140M Motor Grader is just about to clock over 20,000 hours and has been pretty much trouble free apart from a couple of minor items. The Grader has worked extremely hard and is still on its original engine and powertrain. The machine operator claims they should have bought more M series graders years ago !!

Caterpillar’s legendary commitment to research and development, in this case on what was a revolutionary concept with the M Series, has no doubt proven its worth in the eyes of this operator, and machine owner.

William Adams recently delivered 2 x D6T LGP Track Type Tractors and 6 x 730C2 Articulated Dump Trucks to the same site.

FIRST CAT 548 DELIVERED INTO THE VICTORIAN BUSH



Warrick and Damien Alcock from Southern Highlands Contracting have added another Cat to their growing fleet. Delivered in early November, the machine went to work clearing dangerous trees from roadsides around Cann River in far East Gippsland. Fitted with a DJM felling head and HPA front, Warrick cited stability, performance, fuel economy and backup service as major considerations when choosing the big new Cat.

2019 APPRENTICE INTAKE

William Adams have always had a policy of recruiting apprentices each year and learnt from the mistake made by our industry in the early 1980's when companies stopped taking apprentices, causing an ongoing shortage of technicians for many years following.

We traditionally have one annual intake starting February or March, with recruitment commencing the previous year and initial applications shortlisted to sit written aptitude tests. This narrows the field to a select group who are given a practical test such as the CAT CAN Test followed by an interview with our HR Department and representatives from the hiring branch.

Before commencing employment at their respective branches we host a centralised induction at Clayton. This starts with a welcome BBQ where families are also invited; we provide an overview of the apprenticeship and a branch tour to give everyone a glimpse of the workplace and meet the staff the Apprentices will be working with. The following week is spent educating them on the company, safety, the product, industry and some basic skills ready for when they arrive for their first day at the branch. This proven process has over time produced many high quality Apprentices.

In 2018 due to the buoyant economic situation William Adams found itself swamped with work and short on skilled labour. If the labour force you need just isn't available



you create your own, therefore for the first time William Adams held a mid-year Apprentice intake effectively almost doubling our intake numbers.

A total of thirteen new people were recruited in the 2018 mid-year intake to bolster our pipeline of developing skilled Technicians. On the 3rd February 2019 we welcomed our next group of fifteen future Technicians as they take the first steps of their new careers.

“CHANGE THE GAME” NEXT GEN MICRO EXCAVATORS

We have listened, both dealers and Caterpillar alike, and it is very exciting that based on customer - focused design recommendations, stemming from feedback across a variety of customers spanning the globe, that Caterpillar have invested over US\$100m in Facility, New Product Introduction, and Capacity Expansion that we are now in a position to offer the new range of Cat Micro Excavators to customers in our region. In Caterpillar’s own words “We have made the investments to win”, said Warren Green, Territory Manager, Caterpillar (Qld, NT, Vic & Tas).

There are five new models across the range - 301.5, 301.6, 301.7, 301.8 & 302. Included in the line -up are Compact Radius units, Conventional tail swing machines, and some amazing new options such as fully air-conditioned/heated cabs in the 301.6, 301.8 & 302 models.

These new machines also have four Industry Leading features:

- Stick Steer Controls
- Cruise Control
- LCD Monitors
- Fully pressurised Cab with air-conditioning.

Affordability

In addition to these Industry Leading features, these new machines provide up to 15% Lower Total Ownership costs. This has been achieved by way of parts commonality across the range, reduced service times based on improved accessibility, and are built from a durable all steel design.

Performance

Let’s talk performance, up to 20% more in comparison to their predecessors! From a productivity perspective, these machines will be market - leading. “Our new Caterpillar Micro Excavators have the best digging, lifting and multifunction capability in the market”, William Adams’ Sales Manager, Shannon Sadler recently explained to PLUS. “Coupled with best in class productivity, improved travel performance, blade float as standard across all models, dig to blade capability to make cleaning up sites so much easier and quicker, and our customers will quickly identify significant enhancements”. The machines also have a two point lifting capability.

Customer Experience

These machines are Safe, Comfortable and Easy to operate. Caterpillar have ensured a consistent layout across the model range, and have introduced stick steer controls - no foot pedals are required any more. If this is your preference, you simply operate the excavator like you would a skid steer

loader. In the cab - optioned machines, a fully pressurised and sealed cab ensures a dust free, quiet and ergonomically sound environment to work in. In addition to this, and absolute industry first, air-conditioned cab! Each model also comes with an LCD monitor display, which allows up to fifty different user passwords.

Serviceability

Servicing these new state of the art machines has been made a lot easier, with all five models equipped with a tilt up cab, so access under the seat of the machine is achieved in seconds rather than minutes, and ground level access ensures increased productivity.

The new Cat micro’s come equipped as standard across the range:

- Bluetooth FOB which enables push to start capability
- Battery isolator
- Thumb - ready sticks, which means that when it’s time

to add a thumb to your machine, you are ready from day one

- Auto idle, blade float, Product Link (hours and location via GPS daily), LED lighting and suspension seats.

The William Adams New Equipment Sales team undertook training across the range in January this year at our famous Merlo Hills demonstration centre at Clayton, and are excited and looking forward to talking to prospective owners, answering any questions, and demonstrating the features of this all new product range from Cat.

We have inventory in stock right now, and are planning to launch a Next Generation Micro Excavator “Roadshow” in the coming months, where we will offer several opportunities to come and view, operate and experience these machines in a real life environment - more details will follow, but watch this space, or talk to your nearest William Adams’ rep.

You have to see to believe - these machines are truly “Game Changing”.

NEXT GENERATION
MINI EXCAVATORS

CHANGE
THE
GAME



BAUMA – BIGGEST YET

3,700 exhibitors from 63 countries

620,000 visitors from 200 countries

Largest increases in international visitors came from China, Australia and Japan

62 hectares of exhibition space

Caterpillar unveiled twenty new models

86 customers from Victoria & Tasmania travelled with William Adams to attend bauma 2019.

If you attended bauma every day (7 days), missed lunch and spent 54 seconds at each stand, you could get around all 3,700 exhibitors !!





CAT 304E2 CR CONTRIBUTES TO ENERGY SOLUTION

Pictured recently on Tasmania's east coast not far from St Helens, is Thomas Wolf Energy Pty Ltd's new Cat 304E2 CR Mini Excavator.

Thomas Wolf Energy, owned by Nicholas Shaw, is an innovative Tasmanian based, owned and operated energy company specializing in environmentally conscious energy and electrical solutions.

TWE operate state-wide within both residential and commercial domains.

TWE believe that renewable energy is the way of the future, and they are committed to moving Tasmania forward towards a sustainable and energy independent state.

Nicholas ordered the new Cat 304E2 CR for his work with a range of Caterpillar buckets and a ripper tyne. The Cat 304E2 CR is used to dig trenches for power cabling installations and is also used for general earthmoving operations as may be required.

Nicholas is very happy with his new Cat 304E2 and he is looking forward to many years of continued growth for his TWE business.

SLIM TECH SERVICES THE VERY FIRST NEXT GENERATION 302 CR SOLD IN COUNTRY

Daniel Slim from Slim Tech Services is the proud owner of the very first Next Generation Caterpillar 302CR sold in Australia by William Adams, after his recent 302.4D was stolen.

"Ever since Daniel saw the Next Gen 302CR he knew it was for him as it boasted many new cool features that he never had before such as expanding undercarriage, Advance LCD Colour screen, complete fingertip controls, stick steer and cruise control, amongst the many other features this new range will offer", William Adams' Chad Duquesne told PLUS.

Whilst boasting similar (or better, according to Daniel) performance to that of his previous (larger model) 302.4D, Daniel is extremely happy with his purchase and highly recommends the Next Gen Cat Micro excavator for customers looking to purchase a machine in this size class.



DOWNER INVEST IN HOBART ASPHALT PLANT



In January 2019 our William Adams' Hobart Branch delivered a new Cat 938K Wheel Loader to Downer EDI Works' Flagstaff Gully Asphalt Plant in Southern Tasmania. The new machine will be utilised to charge the hopper bins, and replaces an aged Cat 930G which had performed admirably for many years.

Territory Manager Bill Vagg told PLUS he was amazed at the transformation at the Downer site, which is a credit to Downer personnel involved in the upgrade.

The recently installed 140 tonne per hour Asphalt Plant is a state of the art digital operation, and is complemented by the general presentation of the facility, safety initiatives and office accommodation for the three staff who manage the operation.

The new 938K is pictured loading a hopper with product on delivery day.

NEW NEXT GEN MICRO FOR LEO'S CONTRACTING

Pictured next to the very exciting new CAT 301.5 Micro Next Generation excavator is Anthony from Leo's Concreting, based in Thomastown in Melbourne's northern suburbs.

This machine was purchased due to its impressive lifting performance and industry exclusive features such as stick steer, cruise control, Electro Hydraulic control valve featuring implement and joystick customisation and dozer blade float functionality as standard.

The machine is also equipped with an Elite hydraulic hitch, Sureweld trailer and full five year warranty protection.

Anthony couldn't be happier !



Tony Williams and his son Tom operate the local garden supply business in Foster, South Gippsland.

Tony and Tom are pictured alongside their trusty Cat 904B that has operated trouble free for the last 12 years, after purchasing it new from William Adams.

Local support from our Traralgon branch has always made purchasing Cat machines easy, according to Tony, who recently enjoyed taking delivery of his latest Cat 906K Series Wheel Loader.



VERSATILITY KEY FOR GIPPSLAND CATTLE PROPERTY

John Canavan runs a small (140 acre) Poll Hereford beef property at Myrtlebank just outside Sale in East Gippsland.

After taking delivery a new Cat 304E2 Hydraulic Excavator in 2017, John recently added a Cat B4 Hydraulic Hammer to complement the already versatile small Cat machine.

The property had an old set of cattle yards that needed demolishing to make way for a new set, so all the old concrete had to go! The 304E2 and the Cat B4 Hammer proved just the solution.

Aside from some other small projects around the farm John may even look at contracting his machine out with the hammer, and other attachments.

Cat B Series Hammers are suitable for use in a wide range of construction and general demolition applications – such as breaking concrete footpaths and driveways, pavement, roads, masonry, site preparation and landscaping. Each model of B Series Hammer is available in either silenced or non-silenced configurations. The silenced version is identified by the 's' suffix, for example B6s.

"A Cat hammer on a Cat machine, it was well priced and with local support, it made the buying decision easy", according to John.





Daniel Sorraghan is based in Somerville on Melbourne's Mornington Peninsular, from where he operates his dry plant hire business, Sozzcon.

Daniel recently added a second Cat 301.7D CR "Tradie Pack" to add to his growing fleet.

Daniel recently explained to PLUS that in his view, "William Adams were a pleasure to deal with from enquiry to delivery. Machines are top quality and the field service guys are amazing. My customers are wrapped with the power and reliability of the Cat machines, and so am I".

"They run rings around the competitor's machines of the same size", according to Daniel.

CATERPILLAR INTRODUCES NEW LOCATOR DEVICE FOR MACHINE ATTACHMENTS, JOBSITE ASSETS

Caterpillar has added the PL161 attachment locator to the Locator series of the Cat Product Link hardware product line. The PL161 locator is the most advanced OEM integrated technology solution for attachment tracking. With the ability to track location and utilisation, users can know where their attachments are across all work sites, reduce the number of lost attachments, and plan for attachment maintenance and replacement.

The PL161 attachment locator can be used on attachments and non-powered assets as an affordable option for last known location tracking, and it integrates easily into users' operation for full fleet management of machines and attachments from one dashboard on a

smartphone or a tablet. PL161 locator is available from the factory on select attachments and will be factory-installed on all excavator attachments starting from the middle of 2019.

The PL161 locator is a customer installable device that supports operation in harsh environments. The compact design of the locator makes it compatible for a wide range of assets without interfering with the work they are doing. Bluetooth range is up to 30 metres, depending on the environment and any obstructions. The device is battery powered with an estimated life of 2 years.

The PL161 locator is designed to be used with the Cat App and with other PL Series scanning devices installed on Next Generation excavators and retrofit kits are available for older machines. When using the Cat App within range of the PL161 locator device, the location will be logged

automatically. This system leverages cellular and Wi-Fi connectivity through the user's own smartphone or tablet to transmit data to the VisionLink and My.Cat.com applications. Purchase of the PL161 locator comes with a subscription to VisionLink for the life of the device.

The Cat App is compatible with most smart devices that have Bluetooth 4.0 or later and is available for download from the App Store (iOS) or Google Play Store (Android).

Talk to your William Adams' rep, or contact our Customer Solutions Group for more information.



ENGINE AIR FILTRATION

WHAT YOU NEED TO KNOW ABOUT CLEANING AIR FILTERS

Cleaning and reusing engine air filters is a risky practice that can dramatically increase your owning and operating costs. Data shows the process of cleaning your air filter causes damage. Although the damage is not visible to the bare eye, it significantly reduces how effective the filter is at capturing harmful contaminants.

The Outcome of Cleaning

Cleaning your air filter damages your air filter:

- More abrasive particles enter your engine
- Wear to internal engine components is accelerated
- Rebuild cycles are shortened

- Downtime increases
- Productivity decreases
- Maintenance & overall costs increase

Quick Facts

- Microscope images of filter media show that a cleaned filter has 46% less fine fibre media
- Piston ring life can be reduced by almost a third (31%) when using a filter that has been cleaned every other change interval.

Cleaning Primary Air Filter Elements

Caterpillar does not recommend the cleaning of air filter elements since there is not a relatively feasible and reliable method of inspecting air filter elements for damage. A damaged air filter element can allow dirt to pass through, which results in reduced efficiency.

Cleaning the air filter element will result in a progressive reduction from the original filter capacity each time the filter is cleaned. However, if the owner insists on cleaning primary air filter elements to extend filter life, Caterpillar has produced a booklet entitled Caterpillar Filter Recommendations, which can be sourced from William Adams (Service Magazine reference no. SEBU9208).

SECOND LIFE AT FOSTERVILLE FOR RETIRED AD45 EJECTOR

William Adams' PSSR, Michael Jones, recently assisted in the delivery of the first custom built AD45 water cart to Kirkland Lake Gold's Fosterville Gold Mine.

The AD45 is a retired ejector truck that had reached the end of its useful life as a haul truck underground.

In collaboration between Product Support and the William Adams' engineering team in Burnie, a concept was drawn up on site and presented to the underground operations team.

The concept was to revive the retired underground truck and install a 30,000L water tank. This would provide a solution with watering down haul roads and decline walls and provide a water cannon to wash down the footwall of high grade stopes.

This project is a great example of William Adams providing solutions to meet the customer's needs.

Pictured: Michael Jones, William Adams PSSR (right) and Josh Hancock, Fosterville Gold Mine, (left)



HIGH PRAISE FOR ADVANSYS GET SYSTEM FROM VICTORIAN QUARRY



Servicing South West Victoria with an array of crushed materials and the whole of Victoria, Southern NSW and South Australia with contract crushing, screening and conveying services, David Eldridge of DE Quarry Solutions has recently fitted a number of his Hydraulic Excavators with the new and improved Ground Engaging Tool, Cat Advansys.

Backed by over 70 years' experience in the materials handling industry, we asked David to share his recent experiences with Cat Advansys.

PLUS - What has been the major advantage in using Advansys?

David Eldridge - "Since we have started fitting our equipment with Advansys we have seen a dramatic rise in the retention of teeth."

P - Which of your machines are currently using Advansys?

DE - "We have fitted Advansys to our 345C L Hydraulic Excavator and two of our 352F L Hydraulic Excavators."

P - Are you looking to use Advansys on any more of your machines? If so, which ones?

DE - "After experiencing great results and reduced downtime we have just placed orders to fit Advansys on our 345D L Hydraulic Excavator, our 352F L Hydraulic Excavator and our 390D L Hydraulic Excavator."

P - Have there been any identified dollar savings?

DE - "Well, they certainly are wearing very well and we haven't had to replace any teeth on our equipment since we have fitted Advansys. They are still in reasonable condition with over 2000 hours on them and we haven't lost a tooth in that time. Advansys hasn't caused any downtime or loss of production which would normally occur trying to find lost teeth that would usually go into the crushers and potentially cause major issues."

P - What would you say to other businesses looking to use Advansys on their machines?

DE - "Since we have adopted Advansys on a number of our machines, we have experienced positive results in our application of feeding shot rock into mobile crushers."



MONSTER JAM 2018 BRINGS EDGE-OF-YOUR SEAT FAMILY ENTERTAINMENT TO MELBOURNE



William Adams Cat® Rental Store was excited to continue to be part of Monster Jam 2018; the most intense family motorsports entertainment experience on the planet!

With giant Monster Jam trucks competing in racing and freestyle events, Monster Jam 2018 was adrenaline-charged, highflying, four-wheel excitement for the whole family.

Monster Jam trucks strut their stuff on specially-crafted dirt tracks that are designed to push drivers and machines to their limits. When you need to build the perfect track for 10-foot-tall trucks and keeping the show running during the spectacular, that's when you call The Cat Rental Store. Matching the Monster Jam machines in precision engineering and downright hard work, Cat equipment is used to transform AAMI Park arena into a monster's den of jumps, bumps, and thundering thumps!

Whether you're building a Monster Jam track, or just getting on with the job, for all your rental equipment needs, visit a William Adams Cat Rental Store in locations around Victoria and Tasmania.

CAT RENTAL INVESTING IN THE LATEST TECHNOLOGY

The Cat Rental Team is excited to be able to provide our customers with a wide range of quality equipment to suit all your jobs' needs with an ongoing, significant investment in new quality Caterpillar machines.

Mark Rochford our Cat Rental Manager explained, "We have been investing heavily over the past 12 months in products, and configurations that our customers are asking us for. We have over sixty new specification machines rolling into our fleet equipped with the latest in technology and efficiencies, and our plan is to continue this into the future", Mark explained recently to PLUS.

A comprehensive range of excavators from 5 to 50 tonne operating weight have gone to work, including medium size F Series 313 and 315 FL's, Compact Radius 325 and 335FL's and several 349FL's equipped with full 3D control. Over a dozen of the latest Next Generation models, all 3D equipped, arrived in the first half of this calendar year, including 320, 323, 330 and 336.

Track Type Tractors from D5K to D8T include LGP models and full on board technology packages will ensure Cat Rental customers can get the right machine for their job, when they want it.

12M and 140M AWD Motor Graders feature full GPS technology, the latest C2 Series of 730 Articulated Trucks and the all new CW16 Pneumatic Tyred Rollers all hit the Cat Rental Stores by first quarter of 2019.

"It's been a very exciting time for us here in the Cat Rental team", Mark explained. "The business' desire to invest has aligned perfectly with significant market opportunity at a time where Caterpillar continues to provide new and exciting products to the market. The availability of new technology out of the factory, combined with Next Generation machinery, has allowed us to demonstrate significant productivity and efficiency gains, as well as improved safety features for our Cat Rental customers".



Grampians Excavations – First to take on CAT Rental Store's Next Generation Excavators.

The Grampians Excavations Team approached our CAT Rental Store with a specific set of requests - they were looking for a 20 tonne Excavator with 3D GPS and an E-Fence and slew restriction package, as they had a large amount of sensitive works to carry out within a rail corridor for one of their major clients.

Swing Assist, David was able to set Grampians Excavations apart from other contractors on site. The "E-fence" technology allowed the excavator to work adjacent to a live rail corridor thanks to pre-set parameters ensuring no part of the machine was able to slew towards the adjacent rail track.

The Cat 323 3D machine has been working on site for over a month now and has exceeded both Grampians Excavations and their client's expectations, while performing flawlessly, reported Cat Rental Sales Representative – Major Projects, Kurt Lewis.

Fortunately, the first of the Next Generation 3D Excavators had landed into the CRS fleet the day prior.

Once a brief machine introduction had been carried out, David Caserta, the Construction Manager for the Grampians business, knew this machine would not only tick all of the right boxes for his client's specific requirements, but significantly increase safety and productivity.

With the additional features such as the 360 degree camera, CAT Payload, Grade Assist and

DEADLY RIPPLE ROCK, BRITISH COLUMBIA, CANADA BLOWN UP



The Story

In the late 1700s, Captain George Vancouver called the channel at British Columbia's Seymour Narrows, "one of the vilest stretches of water in the world." Its deadliest feature: the twin peaks of Ripple Rock, lurking just below the surface of the swirling water. "Old Rip" had menaced shipping for centuries, sinking or damaging 119 vessels and claiming almost as many lives. But on April 5, 1958, the world's largest non-nuclear peacetime explosion pulled Ripple Rock's teeth forever.

Did You know?

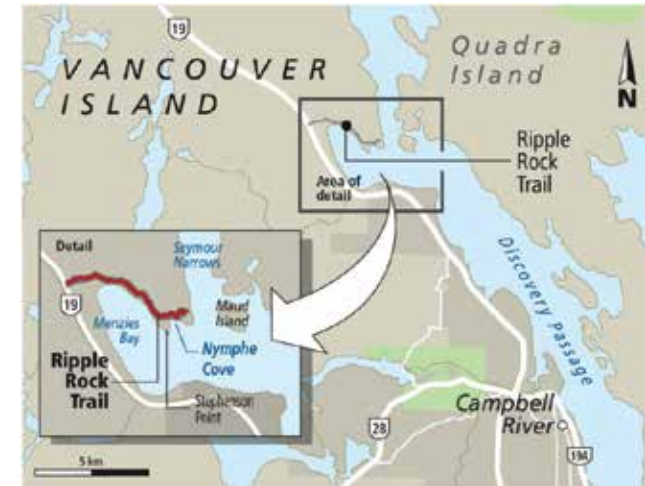
- Ripple Rock lay between Vancouver Island and Quadra Island, 16 kilometres north of the village of Campbell River, about 200 kilometres northwest of Vancouver. The channel at Seymour Narrows is about 120 metres deep, but the south peak of Ripple Rock came within three metres of the surface at low tide. The rocks, and the waves and whirlpools they caused, damaged or sank 20 large vessels and over 100 small ones, killing at least 114 people.
- For 50 years various groups lobbied the government to do something about Ripple Rock. But other groups opposed its removal, hoping it could be used as part of a railway bridge from the mainland.
- In 1943 an effort was made to remove the rock using a floating drilling platform anchored over top of the rock. The current was so strong that the steel cables

snapped and the plan had to be abandoned.

- In 1945 another unsuccessful attempt was made, this time using a barge attached to two massive overhead steel cables that stretched across the narrows. Turbulence was again a problem, and the project was cancelled after less than one-tenth of the required holes had been drilled. Nine men drowned during the operation when a boat capsized.
- In 1953 the National Research Council studied the possibility of tunnelling down from Maud Island, across under Seymour Narrows, and up into the rock. The project was described as "the world's biggest root canal." Work on the gigantic project began in November 1955 and lasted for 27 months.
- When the tunnelling was complete, workers drilled a series of "coyote tunnels" in the tops of the north and south peaks of the rock, and packed them with 1,375 tons of Nitramex 2H explosive. (This was ten times as much explosive as would be needed for a similar

blast above water.) The blast was scheduled for April, a time when there would be few salmon in the area.

- On April 5, 1958, ships and planes were diverted, and the area within five kilometres of the site was evacuated. At 9:31 a.m., the plunger was pushed and Ripple Rock exploded with a "cataclysmic crash."
- The blast blew some 700,000 tons of rock and water 300 metres into the air, and caused waves several metres high, but there was little or no environmental damage.
- The blast was a complete success, lowering the rock to 14 metres below the water level at low tide at the south pinnacle (21 metres at the north.) Ripple Rock would never again threaten ships. The project is still considered a marvellous feat of engineering.
- The Ripple Rock explosion was one of CBC Television's first nationwide live broadcasts.



IMPORTANT TO GET THE DELIVERY PAPERWORK RIGHT

Despite PLUS regularly seeking to feature people, both our own, as well as our customers doing great things, unlike many publications we don't traditionally include a "births, deaths and marriages section".

This edition, we couldn't help but make an exception.

In early December, North West Metro (Vic) rep, Chad Duquesne, and his wife Alana welcomed young Theodore Duquesne into this world, brother to young Leo.

Well-deserved congratulations were circulating the air waves, and PLUS couldn't help but include the following email exchange.

"Thank you to all of you for your support. It's great to have so much support from family and friends but also work colleagues. Theo and mum are doing really well and baby Leo is happy to have a brother", said Chad.

One of our witty Contract Administrators, Tim Bassett, responded "...Good stuff Chadley,

I hope you have all the delivery paperwork filled out properly"?

By way of explanation, anyone who has been through the William Adams' new machine delivery process knows that there is a fair degree of paperwork associated with an otherwise joyous occasion, and it is the role of our Contract Administrators to ensure that said paperwork is completed and submitted by the sales rep in a timely manner – hence Tim's quip !!

Congratulations Alana and Chad, from us all at William Adams and PLUS.



What a great Christmas present – L to R Alana, Theodore, the big fella himself, Leo and proud Dad, Chad.



Big brother Leo, welcomes Theodore home



Guy Rigoni hands over the keys to a Cat Certified Used 140M2 AWD Grader to Martin Moran of National Australian Pipelines.



Ace Earthmoving Pty Ltd based in Morwell have updated an old Cat 311C with a new Cat 311FL RR, pictured here building a new roundabout in Traralgon.



Gary Morrison, owner of Tooradin Excavations, puts his new 3D equipped D6TXL to work on a dam job in South Gippsland.



Damien Polites from Precision Trim & Civil is a proud new owner of a Caterpillar 259D Multi Terrain Loader that will be used mostly for top soil applications and site preparation.

Damien was so excited he asked for "express delivery" to have it onsite by 5:30am within a week of the machine's arrival into the country.

Damien loves his pressurised cabin and heated air suspension seat!

Congratulations on your new purchase Damien



Colac Otway Shire takes delivery of a new Caterpillar 444F Backhoe Loader, featuring All Wheel Steer and All Wheel Drive and fitted with a 1.7 cum Quick Change Multi Purpose bucket.

Alistair McKinnon hands over the keys to the Colac Otway boys just prior to Christmas, 2018.



The latest Cat 988K Series Wheel Loader, pictured on the East Tamar Highway en route towards Bell Bay (northern Tasmania) and its new owners South 32, thanks to Gradco and their trusty quad axle float.



A Big Shout out to Chris & Dan at Hayson Constructions from Chirside Park, Vic. on their purchase of a New Caterpillar 313F L with factory fitted 2D Grade Control Technology. Chris and his team are very excited to put this machine to work using the AME Tilting hitch. The Grade Control technology will be a great asset in their type of work by providing 2D depth and slope without having to leave the comfort of the cabin.



Circular Head, in north west Tasmania boasts the world's cleanest air and water, produces some of the country's finest beef and dairy cattle, and hosts an excellent agricultural show in early December each year.

Late last year, William Adams was in attendance, along with two key customers from the district, namely CCG (Tas) Pty Ltd, along with their new Cat 323 NextGen Excavator, and Collins Contracting, who proudly displayed their new Cat D7E Track Type Tractor.

CCG are based in nearby Forest, and Collins Contracting are located in Smithton

In addition to the Cat D7E and 323, William Adams also featured several new Deutz Fahr tractors on the stand.

From all reports, a great day was had by all.

